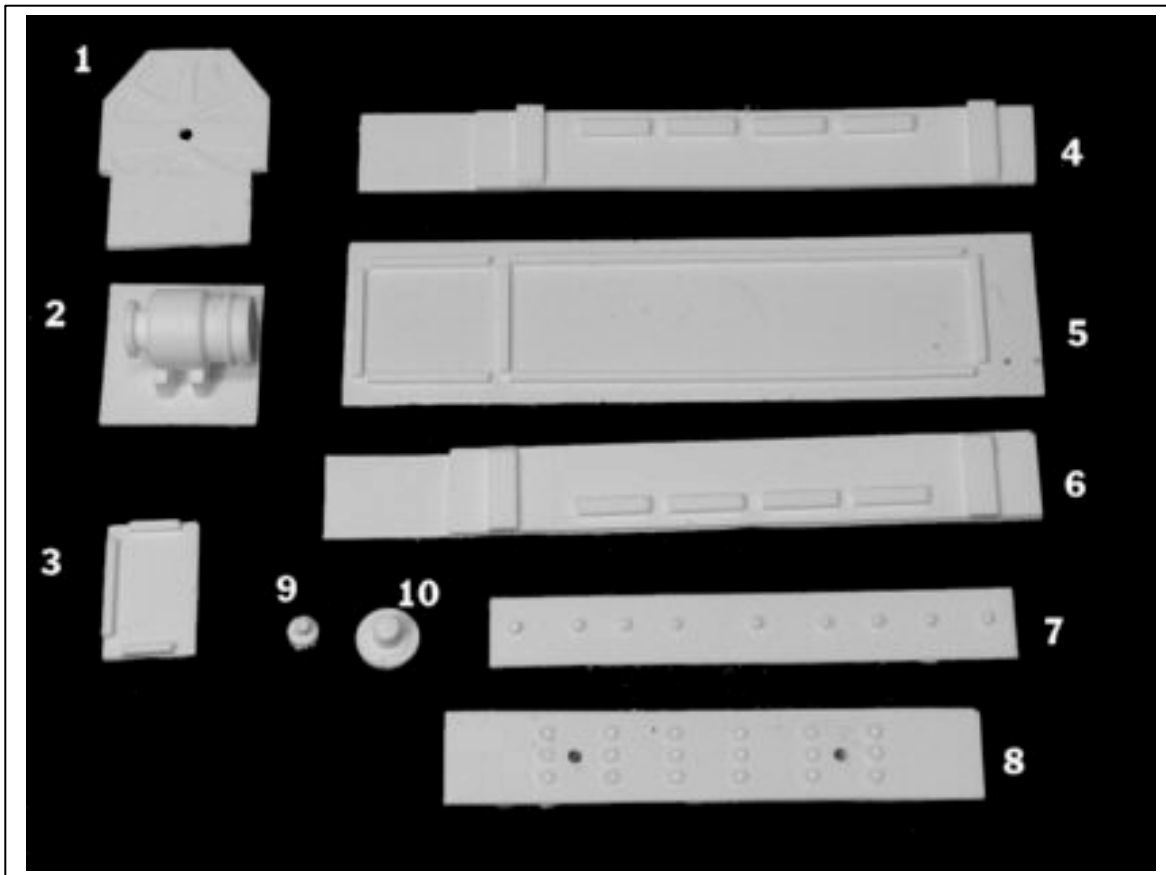


CONCEPT MODELS

Web Address: <http://www.con-sys.com>

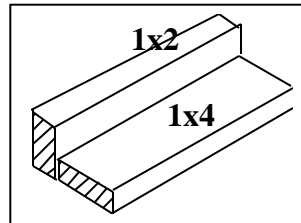
8810 El Toro Way
Stockton, CA 95210



BBCX 1000 GENERATOR LOAD

Tools

All basic model workers tools – files, motor-tool with fine burrs, hobby knife, 1/8” drill, Wood blocks for holding parts square, metal square, etc.



A gluing fixture is a great aid to assembly. It helps hold parts square while gluing.

Instructions

NOTE: This kit consists of resin castings and must be assembled with an ACC cement (not provided) – both the thicker types as well as the thin. Solvent cements will **NOT** bond the parts together! Resin parts are more fragile than common styrene plastic used in injection molded models. Use reasonable care in handling and do not apply any solvents. The illustrations at the front show the general layout of parts for the car. Work very carefully when positioning the parts for gluing. ACC cements adhere very quickly and permanently.

Gluing with ACC Cements – USE WITH CARE

ACC cements allow the modeler to work very quickly. A general rule is to use the thin cements to glue long joints taking advantage of capillary action that makes the cement run the length of the seam. The thicker cement is suited to applying large area parts to each other. An accelerator can be applied sparingly. One technique is to apply the glue to one part and the accelerator to the other part to be joined. I also use a Q-tip to apply a minute amount of accelerator to the glue after the parts have been joined. The accelerator triggers the ACC cement to set very quickly. It is only slightly slower with the thicker cement.

WARNING

Some parts have lead encapsulated within them. In the event the lead is exposed for any reason, do not allow it to remain on the skin. Dispose of any lead shavings that may result. Obey all safety precautions of all suggested cements and assembly materials.

PAINTING

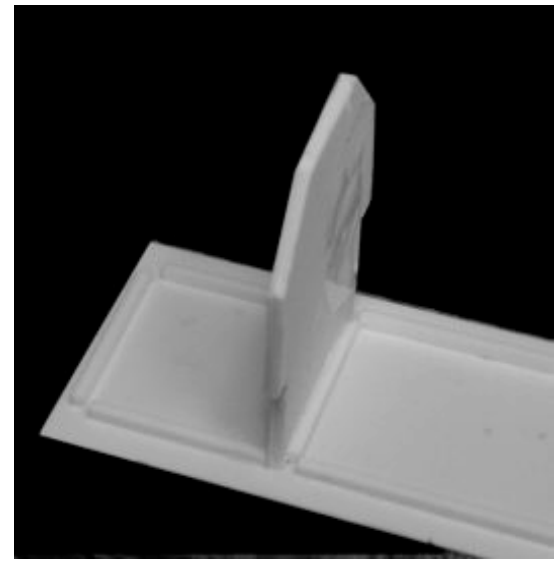
Wash the parts before assembling with a dish washing detergent such as “Dawn”. Rub lightly with a soft sponge. Use a lacquer based primer such as floquil.

PARTS

Item No.	DESCRIPTION	QTY.
1	Ends	2
2	Exciter & Deck	1
3	Deck Support	1
4	Left Lower Side	1
5	Base	1
6	Right Lower Side	1
7	Top Side	2
8	Middle Side	2
10	Input Drive Connector	1
11	Top (Not Shown)	1

ASSEMBLY

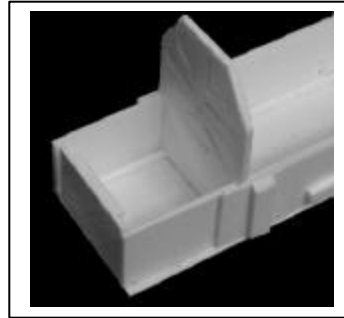
1 Start by attaching one of the ends to the base as shown. Notice the relationship to the guides on the base.



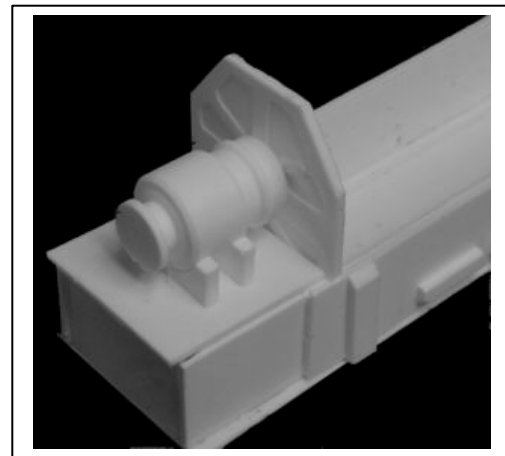
2 Install the other end. Make both ends are square to the base. Then install the left and right lower sides to the base and ends.



3 Install the deck support (3) as shown.



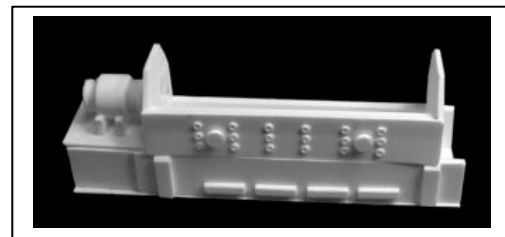
4 Install the Exciter as shown.



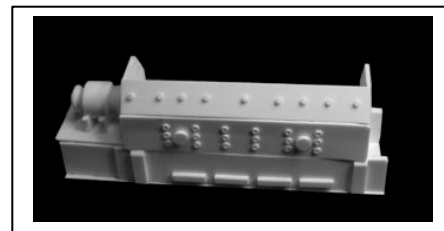
5 Add the output shaft to the



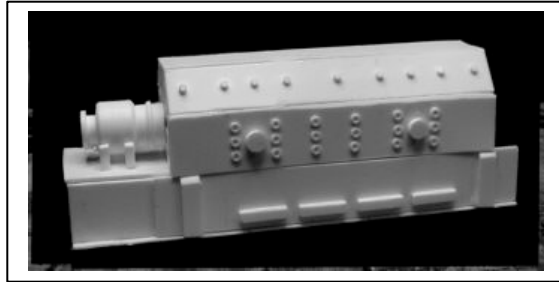
6 Install the Middle Sides (8) on each side.



7 Install the Top Side (7) on each of the angled ends.



8 Install the Top (11) section. It will be necessary to file the top to fit. Bevel the edges where other side sections intersect and fill with your choice of modeling putty. (I use “Bondo” with good results). The load is now ready for paint.



PAINTING

If you followed the instructions for cleaning the parts before assembly, you are ready to paint. A primer such as Floquil's is recommended. Allow to dry overnight before proceeding with any of the color coats. For any parts to be painted a color, the color should be preceded by a coat of white since many pigments are translucent and the color of the primer has an effect – especially on very light colors. For items to be painted white - at least two coats are recommended with overnight drying in between the coats.

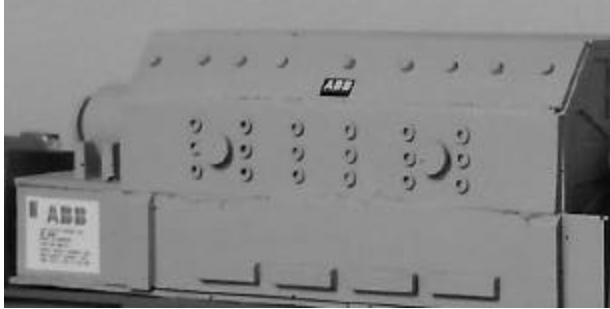
Colors:

Warm Gray – Mix SP Lt. Gray with White and trace of Yellow.

Overcoat with Testor's Glosscote for decaling. After decaling overspray with Testor's Dullcote to protect the decals.

Decaling

Two decals are placed on each side as shown.



The decals provided are a very thin film decal film. Success with these decals depends on following these instructions.

- 1) Cut out the decal segment you are going to apply.
- 2) Dip the decal in warm water which has had 1 drop of DAWN kitchen detergent. Do not leave the decal to soak in the water.
- 3) Slide the decal directly onto the wetted surface with a small brush. Position with the brush. Remove excess water with a tissue.

NOTE: The glue used for the decal sheet is different than what has been used in the past. The water does not dissolve the glue. Water causes a chemical reaction causing an almost immediate release of the decal. For this reason once the decal has been wetted it must be used quickly. It cannot be re-wetted later for use.

- 4) Top coat the decals with Testor's Dullcote for best results.