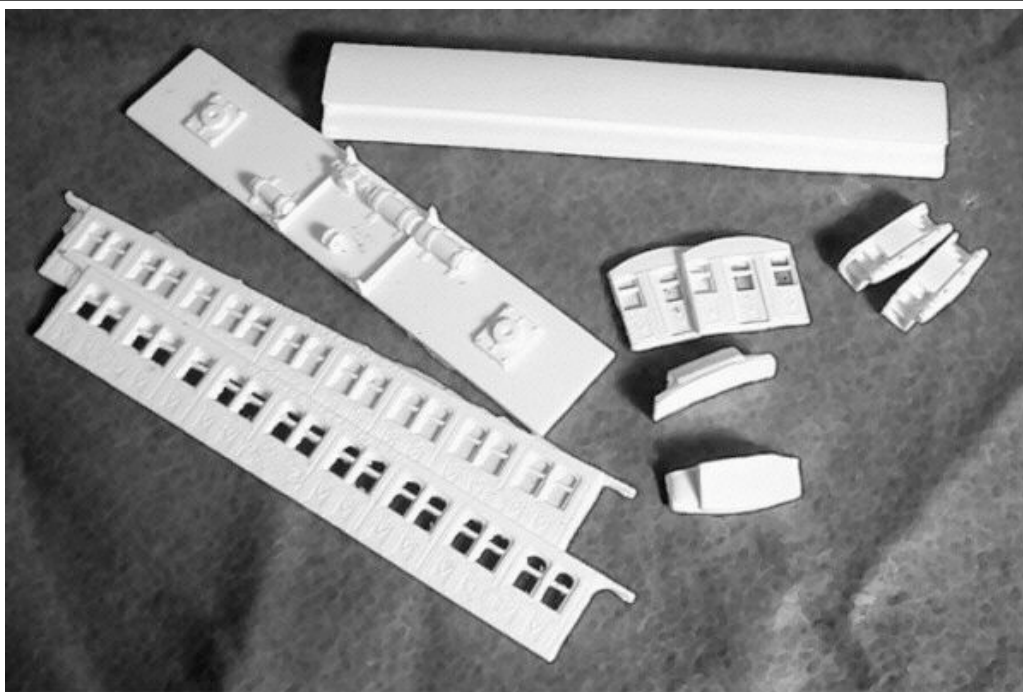


CONCEPT MODELS

<http://www.con-sys.com//Index.htm>
email:concent .odels@con-svs.com

8810 El Toro Way
Stockton, CA 95210



THIS KIT MAKES THIS



Item No.	PART NO.	DESCRIPTION	QTY.
1	5300-1	Roof	1
2	5300-2	Floor	1
3	5300-3	Sides	2
4	5300-4	Ends	2
5	5300-5	End Walk	2
6	5300-6	End Walk Support (.040" x .350" x 1.20")	2
7	5300-7	Roof Ends	2
8	5300-8	Roof Trim	4
9		Coupler Pockets (Std)	2
10		1/8" x 2-56 Screws - Coupler Mount	2
11		3/8" x 2-56 Screws - Truck Mount	2

WARNING

Some parts may have lead encapsulated within them. In the event the lead is exposed for any reason, do not allow it to remain on the skin. Dispose of any lead shavings that may result. Obey all safety precautions of all suggested cements and assembly materials.

Gluing with ACC Cements – USE WITH CARE

NOTE: This kit consists of resin castings and must be assembled with an ACC cement (not provided) – both the thicker types as well as the thin. Solvent cements will **NOT** bond the parts together! Resin parts are more fragile than common styrene plastic used in injection molded models. Use reasonable care in handling and do not apply any solvents.

ACC cements allow the modeler to work very quickly. A general rule is to use the thin cements to glue long joints taking advantage of capillary action that makes the cement run the length of the seam. The thicker cement is suited to applying large area parts to each other. An accelerator can be applied sparingly. One technique is to apply the glue to one part and the accelerator to the other part to be joined. I also use a Q-tip to apply a minute amount of accelerator to the glue after the parts have been joined. The accelerator triggers the ACC cement to set very quickly. It is only slightly slower with the thicker cement. Work very carefully when positioning the parts for gluing. ACC cements adhere very quickly and permanently

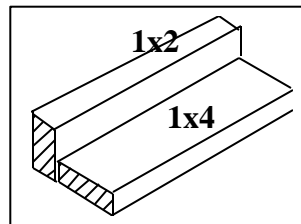
DETAILS

Detailing items may be found at your local dealer. We do not supply wire or metal parts commonly found at your local hobby store. This is a requirement to keep our independence from other suppliers. (We've had back orders at wholesalers one time too many.)

Instructions

Tools Required

All basic model workers tools – files, motor-tool with fine burrs, hobby knife, 1/8" drill, Wood blocks for holding parts square, metal square, etc.



A gluing fixture is a great aid to assembly. It helps hold parts square while gluing.

PREPARATION - Wash the parts before assembling with a dish washing detergent such as “Dawn”. Rub lightly with a soft sponge. Remove any flash from edges and openings with a knife or file.

ASSEMBLY

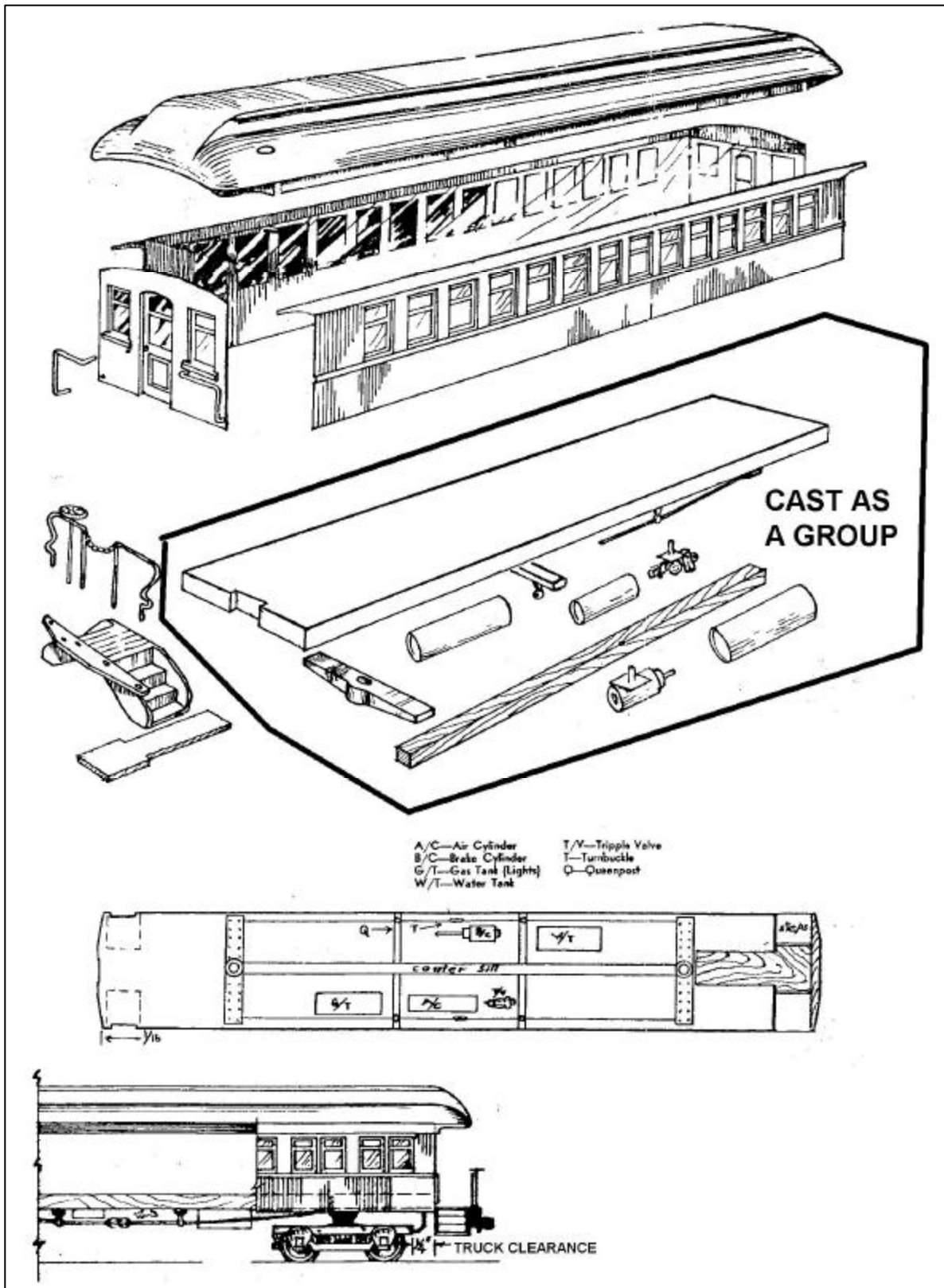
1 Attach the ends to the floor. They should be flush with the bottom edge of the floor.

2 Attach the sides to match up with the top edge of the ends at the corners. The car side may protrude as much as 1/32" below the car floor.

3 Attach the styrene end walk support to the end walks. Glue the assembly to the underside of the floor centered and flush with the car end.

4 Attach the roof ends to the roof matching the top sides. Fit the roof trim to the roof ends to continue the top edge of the roof to match the contour of the roof ends.

5 The car may now be detailed to suit your needs.



FINISHING FOR GILDED DETAILS

1 To achieve the best possible finish, wash away any finger print oils by washing in a mild detergent such as "Dawn". Run with a soft sponge for best results.

2 It is recommended that paints be thinned 50% for best spray application. Apply a primer coat such as a gray primer. Apply in several light coats to avoid paint runs but get a reasonably good coverage over the white plastic.

3 Apply a coat of good metallic Gold such as that sold as "Model Master" by Testor. Let it dry "hard" (completely..

4 Apply at least two coats of Testor's Glosscote. Allow the model to **completely dry** before proceeding to the next step.

5 Apply a coat of brown paint over the entire car to simulate a varished car. While the paint is still soft but not wet, rub away the paint at the raised detail areas to reveal the gold color underneath. A pencil eraser works fine if you cut it off square to make a "cutting edge". Be careful to not rub so hard that the gold layer underneath is destroyed.

6 Apply a top coat of Testor's Dullcote for a matte finish. Although cars of this era were "varnish". Historically, weather very quickly removed any gloss appearance.