

CONCEPT MODELS

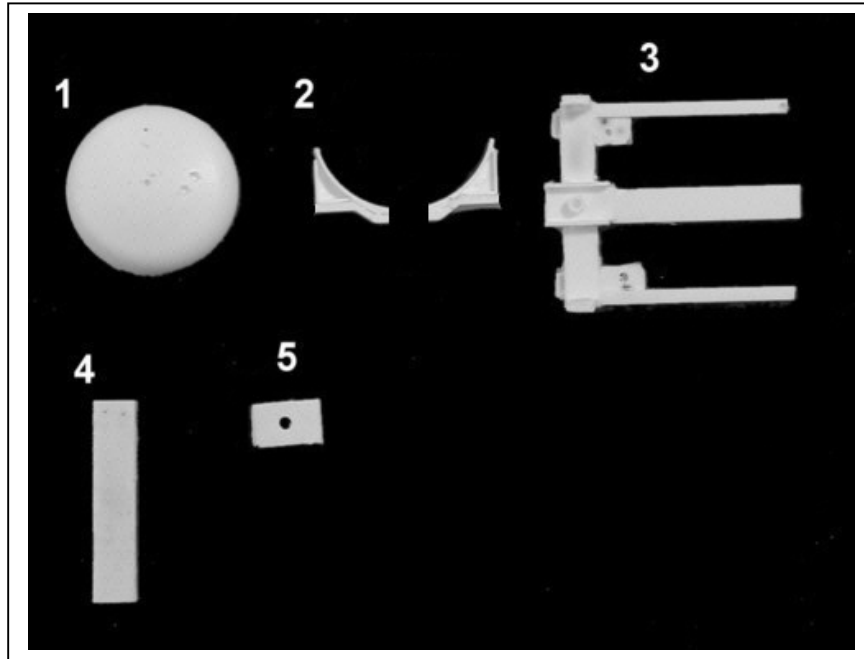
Web Address: <http://www.con-sys.com>
Email: concept_models@con-sys.com

8331 Sheep Ranch Rd.
Mountain Ranch, CA 95246



**INSTRUCTIONS FOR PRODUCT:
UTLX 79650 SHORTIE CORN SYRUP TANK CAR**

PARTS – UTLX 79599 - 79650



Item No.	PART NO.	DESCRIPTION	QTY.
1	8039-1	Flat Tank Ends	2
2	8039-2	Tank Saddle Halves	4
3	8039-3	End Sill/Bolster Assy.	2
4	8039-4	End Deck	2
5	8039-5	Coupler Pocket Covers (CM)	2
6	8039-6	Upper Platforms	2
7	8039-7	Manway & Cover (set)	1
8	8039-8	Safety Vent	1
9	8039-9	Unloading Valve	1
10	8039-10	Placard Holders	4

GENERIC PARTS	QTY.
3/16" x 2-56 Screws	2
Brake Mech.	1
Brake Wheel	1
Brake Reservoir	1
Brake Valve	1
Brake Cylinder	1
Small Pin	1
Tank Body – 23'-6"	1
Decals	1
Instructions	1

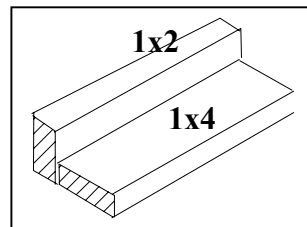
Tools

All basic model workers tools – files, motor-tool with fine burrs, hobby knife, Wood blocks for holding parts square, metal square, etc.

Drills: 1/8", #76, #72, #68, #50 (2-56 tap drill), #65

Music Wire .020" for handrails. Athearn stanchions for tanks cars.

Pins (dressmaker type) for attaching brake wheels and other items.



This fixture is a great aid to assembly. It helps hold parts square while gluing and aids in drawing horizontal lines on tanks for tank cars.

Instructions

NOTE: This kit consists of resin castings and must be assembled with an ACC cement (not provided) – both the thicker types as well as the thin. Solvent cements will **NOT** bond the parts together! They can dissolve them. Resin parts are more fragile than common styrene plastic used in injection molded models. Use reasonable care in handling and do not apply any solvents. The illustrations at the front show the general layout of parts for the car. Work very carefully when positioning the parts for gluing. ACC cements adhere very quickly and permanently.

Gluing with ACC Cements – USE WITH CARE

ACC cements allow the modeler to work very quickly. A general rule is to use the thin cements to glue long joints taking advantage of capillary action that makes the cement run the length of the seam. The thicker cement is suited to applying large area parts to each other. An accelerator can be applied sparingly. One technique is to apply the glue to one part and the accelerator to the other part to be joined. I also use a Q-tip to apply a minute amount of accelerator to the glue after the parts have been joined. The accelerator triggers the ACC cement to set very quickly. It is only slightly slower with the thicker cement.

PREPARATION Wash the parts before assembling with a dish washing detergent such as “Dawn”. Rub lightly with a soft sponge.

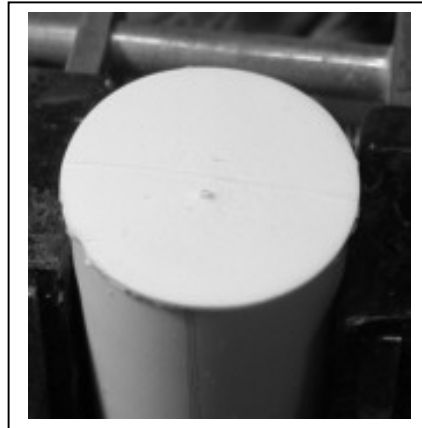
ASSEMBLY

1 Use a 45 degree centering tool to make opposite sides of the tube end. Draw longitudinal lines for top and bottom center.

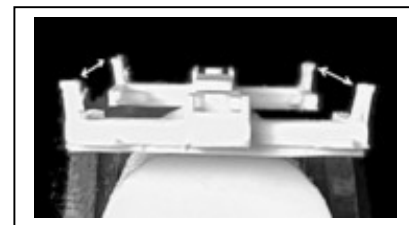
If you wish to add the weld lines to the tank, refer to the tank layout drawing on the next page. Welds can be simulated by dipping thread in glue and applying at the places shown.

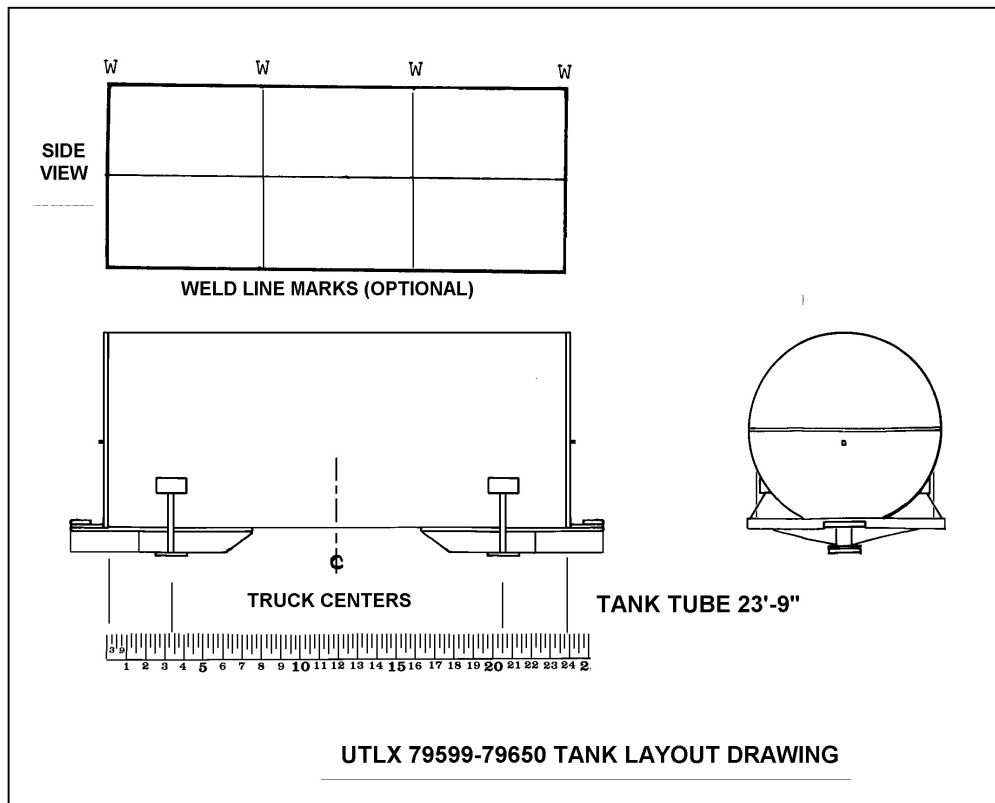
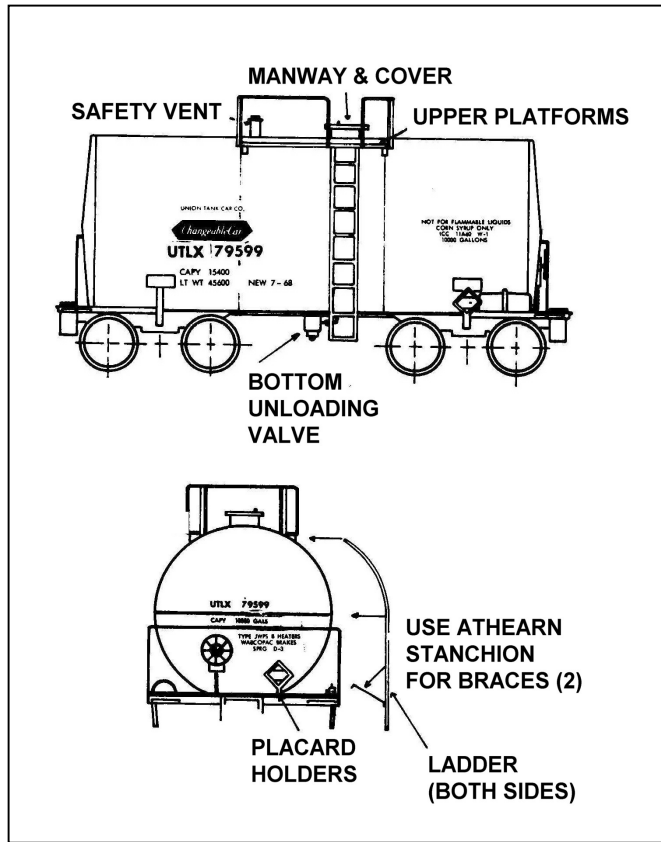


2 Apply the ends so that the cast-in weld line is horizontal. File down the end until it is even with the tank body. A motor tool works well for this task.



3 Apply the End Sill/Bolster assemblies as shown. Use the tank layout drawing for location.

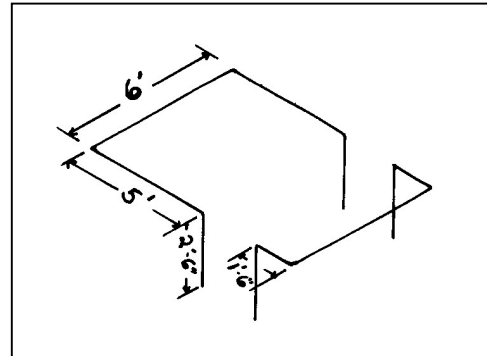




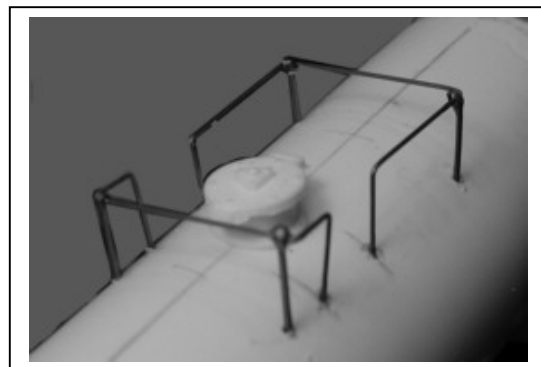
4 Apply the Tank Saddles as shown after locating the truck centers. (Again refer to the tank layout drawing.)



5 Create the upper handrails from .020" music wire.



6 Install the handrails and stanchions as shown. Use ACC cement to anchor the pieces. Add upper platforms. They are cemented to the tank at the sides of the fill hatch.



PAINTING

- 1) If you followed the instructions for cleaning the parts before assembly, you are ready to paint. A primer such as Floquil's is recommended.
- 2) Since this is an all black car, painting is quite simple. After applying the primer, wait until the car appears dry – about an hour. The paint may still be soft but go ahead with the black coat. Wait about an hour and then go ahead with the next step.
- 3) Overcoat entire car with Testor's Glosscote prior to decaling. If you decal over the Glosscote as soon as it is dry to the touch, decal adhesion is improved.

DECALING

The decals provided are a very thin film decal film. Success with these decals depends on following these instructions.

- 1) Cut out the decal segment you are going to apply.
- 2) Dip the decal in warm water which has had 1 drop of DAWN kitchen detergent. **Do NOT leave the decal to soak in the water and slide off the backing.**
- 3) Slide the decal directly off of the backing onto the wetted surface with a small brush or tweezers. Position with the brush. Remove excess water with a tissue.
- 4) A decal setting solution is recommended for best adhesion.

NOTE: The glue used for the decal sheet is different than what has been used in the past. The water does not dissolve the glue. Water causes a chemical reaction causing an almost immediate release of the decal. For this reason once the decal has been wetted it must be used quickly. It cannot be re-wetted later for use.

- 5) Top coat the decals with Testor's Dullcote for best results.

