

# CONCEPT MODELS

<http://www.con-sys.com/Index.htm>  
email:concept\_models@con-svs.com

8810 El Toro Way  
Stockton, CA 95210



**NOTE:** This kit consists of resin castings and must be assembled with an ACC cement (not provided) – both the thicker types as well as the thin. Solvent cements will **NOT** bond the parts together! Resin parts are more fragile than common styrene plastic used in injection molded models. Use reasonable care in handling and do not apply any solvents..

**HALLIBURTON OIL CO. HOPPER CAR**

**HALLIBURTON OIL CO.**

| Item No.             | PART NO.              | DESCRIPTION            | QTY. |
|----------------------|-----------------------|------------------------|------|
| 1                    | 3501-1                | Underframe             | 1    |
| 2                    | 3501-2                | Top Deck               | 1    |
| 3                    | 3501-3                | Tank Bottoms (conical) | 3    |
| 4                    | 3501-4                | Tank Centers (tubing)  | 3    |
| 5                    | 3501-5                | Tank Tops              | 3    |
| 6                    | 3501-14               | Catwalks               | 3    |
| <b>GENERIC PARTS</b> |                       |                        |      |
|                      | Draft Gear Box Covers |                        | 2    |
|                      | 1/8" Screws           |                        | 2    |
|                      | Brake Stand           |                        | 1    |
|                      | Brake Wheel           |                        | 1    |
|                      | Pin, Small            |                        | 1    |
|                      | Brake Valve           |                        | 1    |
|                      | Brake Reservoir       |                        | 1    |
|                      | Brake Cylinder        |                        | 1    |
|                      | Ladders (PLA)         |                        | 2    |
|                      |                       |                        |      |
|                      | Decals                |                        | 1    |
|                      | Instructions          |                        | 1    |
|                      |                       |                        |      |

**WARNING**

Some parts may have lead encapsulated within them. In the event the lead is exposed for any reason, do not allow it to remain on the skin. Dispose of any lead shavings that may result. Obey all safety precautions of all suggested cements and assembly materials.

## Instructions

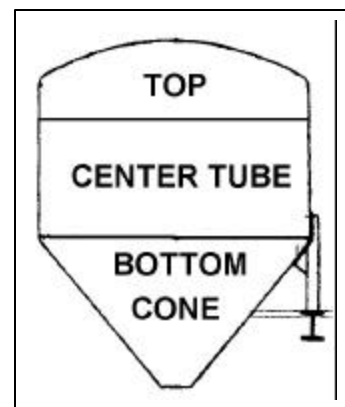
### Tools Required

All basic model workers tools – files, motor-tool with fine burrs, hobby knife, #76 drill.

**PREPARATION** Wash the parts before assembling with a dish washing detergent such as “Dawn”. Rub lightly with a soft sponge. Remove all flash from the castings including the "webbed: areas. DO NOT REMOVE THE "X" BRACING ON THE TANK SUPPORT ASSEMBLY.

## ASSEMBLY

**1** Assemble the three tanks by cementing the top and bottom cone to the center tube. Use a motor tool two enlarge the Center Tube and the Top and Bottom .



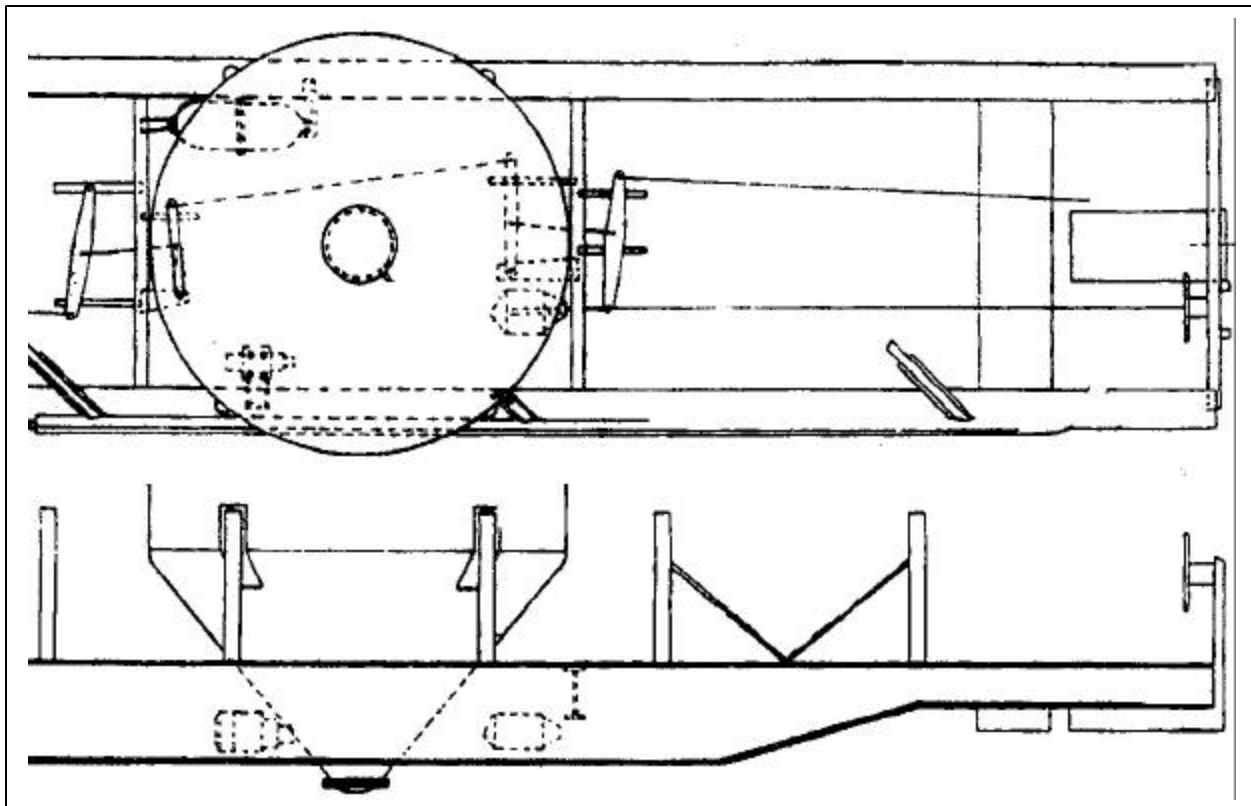
**2** Locate the frame and the tank support. These are the two largest parts and make up the bulk of the car. Attach the tank support centered on the frame. Use the thin ACC cement. Trim the excess of the tank support that overhangs the end of the frame. After the cement has set, remove the "X" bracing that connects the tank bracing.

**3** Cement the tanks in place on the tank supports using thick ACC cement. It is necessary to "web" the cement between the tank and the supports. Make sure the tanks appear straight from all angles. Take time with this step since it will affect the appearance of the finished model.

**4** Attach the draft gear box covers with the 1/8" 2-56 screws.

**5** Attach the catwalks to the top of the tanks with thick ACC cement. It will be necessary to trim the ends to get a fit between the tanks and not overhang the ladders. Attach the ladders between the top of the end tanks to the deck of the car.

**6** Attach the three brake components to the inside of the underframe as shown. Drill a #76 hole in the brake wheel and the brake stand. Use the small pin to attach the brake wheel to the brake stand. Install at the end of the car with the wheel facing in. The diagram shows extra brake detail parts that are not furnished.



**7** Paint the car using a lacquer based primer such as Floquil's. paint the tops of the tanks gray - primer works. Paint the rest of the car primary red - SOO line red by Floquil is a good color and it is a gloss which makes it suitable for decaling.

**8** Decal the car according to the diagram provided. Set the decals using a setting solution such as Champ's Solvaset or other suitable one. Overcoat the entire car with Testor's Dullcote to dull the decal shine and protect the finished painted car. Install couplers and trucks. ENJOY!

