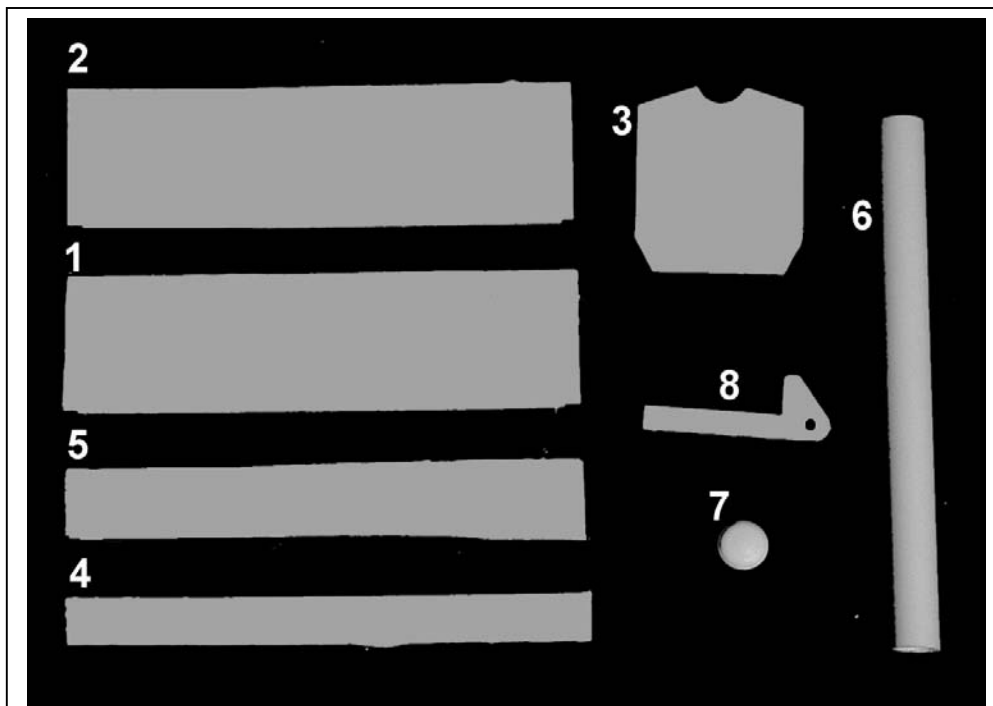


CONCEPT MODELS

<http://www.con-sys.com/Index.htm>
email:concept_models@con-sys.com

8331 Sheep Ranch Rd.
Mountain Ranch, CA 95246



NOTE: This kit consists of resin castings and must be assembled with an ACC cement (not provided) – both the thicker types as well as the thin. Solvent cements will **NOT** bond the parts together! Resin parts are more fragile than common styrene plastic used in injection molded models. Use reasonable care in handling and do not apply any solvents.

CEBX 100 BOILER LOAD

Item No.	Part No.	PART DESCRIPTION	QTY.
1	6516-1	Sides - 10 ³ -3" x 40' Styrene	2
2	6516-2	Bottom - 10 ³ -9" x 40' Styrene	1
3	6516-3	Ends	4
4	6516-4	Lower Sides - 3'-9" x 40' Styrene	2
5	6516-5	Top Side - 5'-6" x 40' Styrene	2
6	6516-6	1/2" Tube	1
7	6516-7	End Caps	2
8	6516-8	Lift Brackets	4
9	6516-9	1/8" x 1-1/4" Tubes	2
10	6516-10	Decals	1
11	6516-11	Instructions	

WARNING

Some parts have lead encapsulated within them. In the event the lead is exposed for any reason, do not allow it to remain on the skin. Dispose of any lead shavings that may result. Obey all safety precautions of all suggested cements and assembly materials.

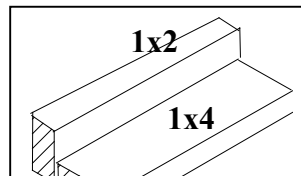
Gluing with ACC Cements – USE WITH CARE

ACC cements allow the modeler to work very quickly. A general rule is to use the thin cements to glue long joints taking advantage of capillary action that makes the cement run the length of the seam. The thicker cement is suited to applying large area parts to each other. An accelerator can be applied sparingly. One technique is to apply the glue to one part and the accelerator to the other part to be joined. I also use a Q-tip to apply a minute amount of accelerator to the glue after the parts have been joined. The accelerator triggers the ACC cement to set very quickly. It is only slightly slower with the thicker cement. Work very carefully when positioning the parts for gluing. ACC cements adhere very quickly and permanently

Instructions

Tools Required

All basic model workers tools – files, motor-tool with fine burrs, hobby knife, 1/8” drill, Wood blocks for holding parts square, metal square, etc. . Squadron's "Green Putty" or "Bondo" are needed for filler for minor gas bubbles created during the casting process. Any ACC cement ("Krazy Glue"). ACC cement accelerator is also a good idea.

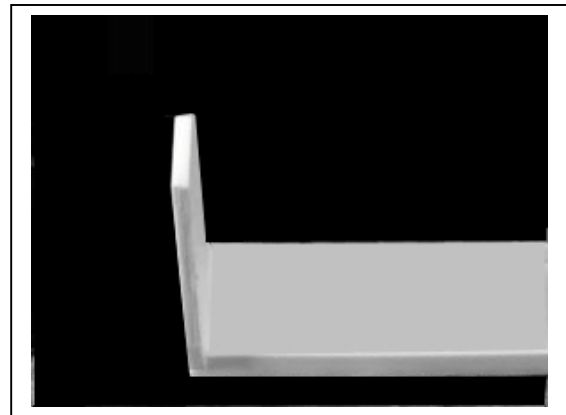


A gluing fixture is a great aid to assembly. It helps hold parts square while gluing.

PREPARATION Wash the parts before assembling with a dish washing detergent such as “Dawn”. Rub lightly with a soft sponge.

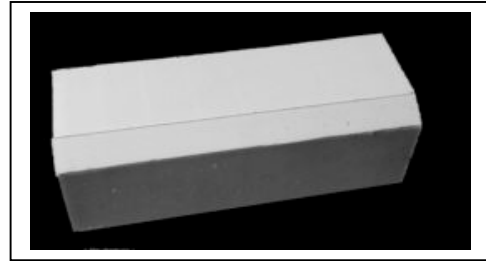
ASSEMBLY

1 Glue the ends to the bottom using ACC cement. Use a square to ensure the assembly is square.

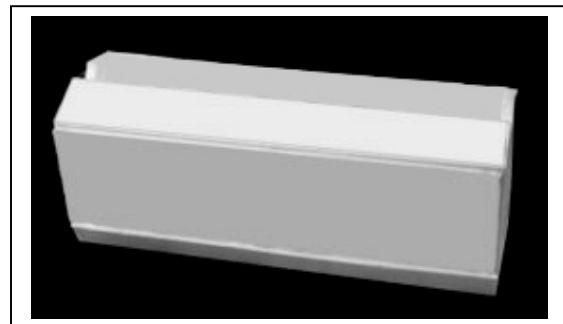


2 Install the large side pieces still maintaining the square shapes of the assembly.

It is necessary to bevel the edges to fit small bottom side pieces. Install the small bottom side pieces as shown.



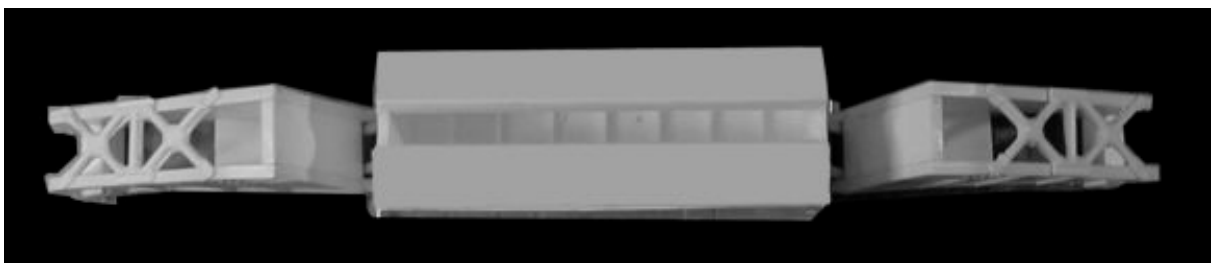
3 Bevel the top edges of the sides to fit the top pieces. Make sure that the top opening allows for fitting of the long 1/2" tube.



4 Fit the 1/2" tube to the top of the load but do not cement. Install the two end cabs after trimming the tube to fit.

The unattached tube allows testing of the car with load and adding weight as necessary.

5 Thread two load supports onto brass rods and position the load on center as shown. Glue and check with a straight edge to ensure the load is positioned straight.



6 After painting the car and the load should be track tested. Add additional weight to ensure tracking of all truck assemblies.

PAINING

1 Fill all surface blemishes with "Green Putty" or "Bondo". These are usually gas bubbles created during the 1-1/2 minute setting time and are unavoidable in the casting process. Pictures I have seen of various loads show the the units painted green, silver, and gray. There may be others that I am not aware of but you are at liberty to choose.

DECALING

